



# Bulletin Officiel de la Cote

## BOURSE REGIONALE DES VALEURS MOBILIERES S.A.

SOCIETE ANONYME AU CAPITAL DE FCFA 3 062 040 000  
 Siège Social: Abidjan - COTE D'IVOIRE  
 Siège Social : 18, Rue Joseph Anoma (Rue des Banques) – 01 B.P. 3802 Abidjan  
 Tel: (225) 20 326 685 / 20 326 686 Fax : (225) 20 326 684  
 Site Internet: [www.brvm.org](http://www.brvm.org)

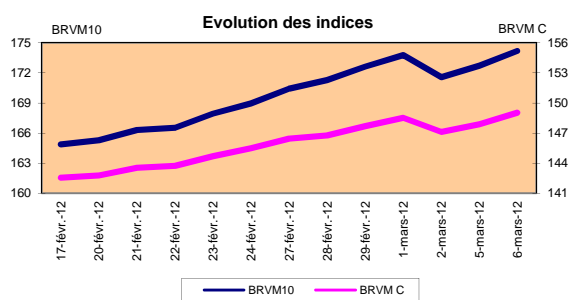
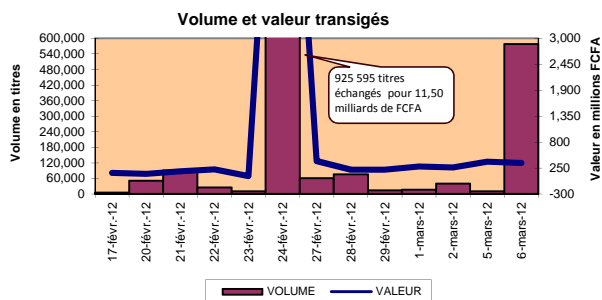
Bulletin du 06 mars 2012

Vol : 15 N° : 46

### Séance du 06 mars 2012

#### Indices de référence

Base = 100 au 15 septembre 1998	Fermeture	Variation		Fermeture Précédente	Capitalisation Boursière en F CFA
		en valeur	en %		
BRVM 10	174.19	1.48	0.86%	172.71	2,643,747,240,838
BRVM Composite	149.03	1.15	0.78%	147.88	3,411,877,391,273
Capitalisation du marché obligataire ( en F CFA)					800,349,398,400



#### Indices sectoriels

Base = 100 au 14 juin 1999	Fermeture	Variation		Fermeture Précédente	Nombre de sociétés
		en valeur	en %		
BRVM - Industrie	78.40	0.43	0.55%	77.97	13
BRVM - Services Publics	368.54	-0.69	-0.19%	369.23	4
BRVM - Finances	53.48	-0.11	-0.20%	53.59	8
BRVM - Transport	201.55	0.00	0.00%	201.55	2
BRVM - Agriculture	480.03	22.08	4.82%	457.95	4
BRVM - Distribution	108.32	1.69	1.58%	106.63	7
BRVM - Autres Secteurs	59.26	0.00	0.00%	59.26	1

#### Sommaire du marché

	Volume Transigé	Valeur Totale Transigée (F CFA)	Nombre de Transactions	Nombre de titres échangés	Titres		
					Gains	Pertes	Inchangés
Actions	577,905	356,733,105	116	15	7	4	4
Obligations	17	170,000	5	1	0	0	1
Droits	0	0	0	0	0	0	0

Titres les plus actifs		Plus fortes hausses			Plus fortes baisses		
Titres	Volume	Titres	Cours	Variation	Titres	Cours	Variation
ECOBANK TRANS. INCORP. TG	571,805	SOGB CI	75,000	5000	CIE CI	24,000	-990
SAPH CI	1,886	SAPH CI	51,000	3900	PALM CI	20,500	-505
PALM CI	1,314	NESTLE CI	45,000	2000	SGB CI	41,500	-500
SOGB CI	1,004	CFAO CI	18,625	1295	SIVOA CI	6,490	-210
SONATEL SN	881	BERNABE CI	30,000	1000			

#### Indices boursiers internationaux

Places financières africaines	Indices	Clôture 6-mars-12	Variation Séance précédente	Indices au 30-déc.-11	Autres places financières	Indices	Clôture 6-mars-12	Variations Séance précédente	Indices au 30-déc.-11
ACCRA (*)	GSE	1,026.84	-3.92%	969.03	PARIS (**)	CAC 40	3,434.93	-1.48%	3,159.81
CASABLANCA (*)	MADEX	9,337.67	0.16%	9011.57	LONDRES (**)	FOOTSIE 100	5,814.90	-1.02%	5,572.28
LAGOS (*)	NSE	20,292.02	1.97%	20,730.63	NEW YORK (**)	DJIA	12,962.81	-0.11%	12,217.56
TUNIS (*)	TUNINDEX	4,743.59	-0.22%	4,722.25	TOKYO (*)	NIKKEI 225	9,637.63	-0.63%	8,455.35

(\*) Indices de la veille

(\*\*) Indices à 11 H00GMT

#### Coupons annoncés

Symbole	Titre	Coupon		
		Montant net (FCFA)	Date de détachement	Date de paiement

ND: Non Disponible



**MARCHÉ DES OBLIGATIONS**

Séance du 06 mars 2012

Symbole	Titre	Qté	Cours Ach. / Vend.	Qté	Cours du jour	Volume	Valeur	Cours Précéd.	Séance prochaine		Coupon couru	Type Amort	Coupon d'intérêt			
									Cours Référence	Ecart max			Période	Montant net	Eché.	
<b>OBLIGATIONS REGIONALES</b>																
BIDC.O1	BIDC 5.60% 2006-2013				NC			10,000	10,000	9,250	10,750	318.25	ACD	A	560.000	11-août
BIDC.O2	BIDC 6.75% 2010-2017		/ 10000	295	10,000	17	170,000	10,000	10,000	9,250	10,750	284.79	ACD	S	337.500	04/04-10
BOAB.O2	BOA BENIN 6.20% 2009-2014		/ 10000	60	NC			9,900	9,900	9,160	10,640	409.23	AC	A	582.800	23-juin
BOABF.O2	BOA BURKINA F. 6.20% 2009-2014				NC			10,000	10,000	9,250	10,750	409.23	AC	A	582.800	23-juin
BOAC.O1	BOA - CI 6.20% 2009-2014				NC			10,000	10,000	9,250	10,750	426.65	AC	A	607.600	23-juin
BOAD.O7	BOAD 5% 2005-2013				NC			10,000	10,000	9,250	10,750	94.52	ACD	A	500.000	28-déc
BOAD.O9	BOAD 5% 2006-2014				NC			10,000	10,000	9,250	10,750	38.36	ACD	A	500.000	07-févr
BOAD.O10	BOAD 4.75% 2006-2012				NC			10,000	10,000	9,250	10,750	36.44	ACD	A	475.000	07-févr
BOAM.O2	BOA MALI 6.50% 2009-2014				NC			10,000	10,000	9,250	10,750	397.09	AC	A	565.500	23-juin
BOAN.O1	BOA NIGER 6.50% 2009-2014				NC			9,850	9,850	9,115	10,585	397.09	AC	A	565.500	23-juin
BOAS.O1	BOA SENEGAL 6.50% 2009-2014				NC			9,800	9,800	9,065	10,535	429.04	IF	A	611.000	23-juin
CAAB.O3	CAA BENIN 6.50% 2011-2016				NC			10,000	10,000	9,250	10,750	209.56	ACD	A	650.000	09-nov
CLTB.O2	CELTEL BURKINA 6.35% 2007-2013				NC			10,000	10,000	9,250	10,750	29.35	ACD	S	298.450	17/02-08
EOS.O2	ETAT SENEGAL 5.50% 2007-2012				NC			10,000	10,000	9,250	10,750	210.96	ACD	A	550.000	18-oct
EOS.O3	ETAT SENEGAL 6.75% 2010-2015				NC			9,900	9,900	9,160	10,640	205.27	ACD	A	675.000	16-nov
EOT.O2	ETAT TOGOLAIS 6.50% 2011-2016				NC			9,900	9,900	9,160	10,640	634.02	ACD	A	650.000	15-mars
PAAC.O1	PAA 6.95% 2010-2017				NC			9,900	9,900	9,160	10,640	184.74	ACD	S	338.639	28/05-11
PADS.O2	PAD 7% 2010-2017				NC			10,000	10,000	9,250	10,750	125.14	ACD	S	304.500	22/06-12
PALC.O1	PALMCI 7% 2009-2016				NC			10,000	10,000	9,250	10,750	129.68	ACD	S	343.000	28/06-12
SEM.O1	SEMA 6.85% 2007-2012				NC			10,000	10,000	9,250	10,750	168.17	ACD	S	297.975	24/05-11
SHAF.O2	SHELTER AFRIQUE 6% 2008-2014				NC			10,000	10,000	9,250	10,750	174.25	ACD	S	299.178	21/05-11
STRAC.O1	SOTRA 6.80% 2007-2012				NC			9,800	9,800	9,065	10,535	449.73	AC	A	666.400	03-juil
TGTLT.O1	TOGO TELECOM 6.50% 2007-2014	45	5800 / 6000	60	NC			6,000	6,000	5,550	6,450	20.73	ACD	S	188.116	15/02-08
TPBF.O2	TPBF 6.50% 2011-2016				NC			10,000	10,000	9,250	10,750	134.97	ACD	A	650.000	21-déc
TPCI.O8	TPCI 6.95% 2009-2014	300	9800 /		NC			9,800	9,800	9,065	10,535	408.60	ACD	A	696.904	05-août
TPCI.O9	TPCI 6.25% 2010-2013				NC			9,800	9,800	9,065	10,535	478.14	IF	A	625.000	31-mai
TPCI.O10	TPCI 7% 2010-2017		/ 10000	804	NC			10,000	10,000	9,250	10,750	300.27	AC	A	700.000	01-oct
TPCI.O11	TPCI 6.5% 2011-2016		/ 10000	11,700	NC			10,000	10,000	9,250	10,750	308.08	AC	A	650.000	15-sept
<b>TOTAL</b>						<b>17</b>	<b>170,000</b>									
<b>OBLIGATIONS KOLAS</b>																
AFD.O1	AFD 5.25% 2008-2016				NC			9,900	9,900	9,160	10,640	516.39	IF	A	525.000	12-mars
<b>TOTAL</b>																
<b>TOTAL-Marché des obligations</b>						<b>17</b>	<b>170,000</b>									

**Légende:**

Type Amort: Type d'Amortissement - IF: IN FINE - AC: AMORTISSEMENT CONSTANT - AD: AMORTISSEMENT DEGRESSIF - ACD: AMORTISSEMENT DIFFERE CONSTANT

Période : Périodicité de paiement des coupons - A: annuelle - S: Semestrielle - T: Trimestrielle

Eché. : Echéance de paiement des intérêts

Mentions : NC: Non Coté Ex: Ex-coupon ou Ex-droit SP: Suspendu DIF: Différé

**Avis, Décisions, Instructions & Circulaires du jour**

Avis N°043/BRVM du 06 Mars 2012 Suspension du titre CEDA CI.

Les Avis et Instructions sont disponibles auprès des Antennes Nationales de Bourse et sur le site internet de la BRVM : [www.brv.m.org](http://www.brv.m.org)

**Erratum:**



# Official Newsletter

## BOURSE REGIONALE DES VALEURS MOBILIERES S.A.

LIMITED COMPANY, CAPITAL XOF 3 062 040 000  
 Head Office: Abidjan - COTE D'IVOIRE  
 Address: 18, Rue Joseph Anoma (Rue des Banques) – 01 B.P. 3802 Abidjan  
 Tel: (225) 20 326 685 / 20 326 686 Fax : (225) 20 326 684  
 Website : [www.brvm.org](http://www.brvm.org)

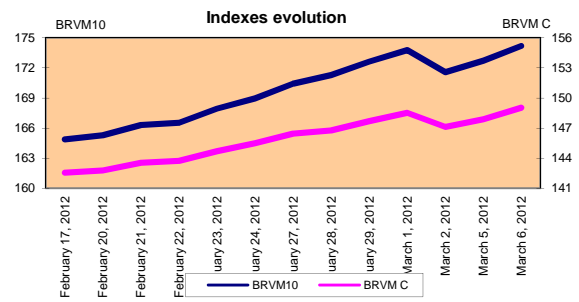
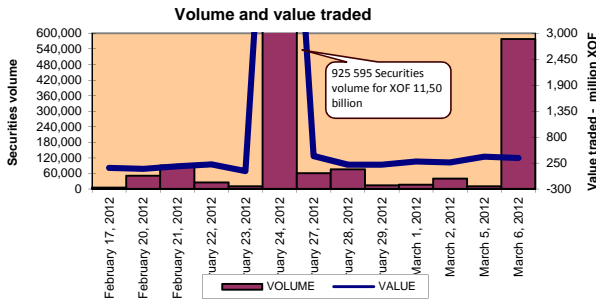
March 6, 2012

Vol : 15 N° : 46

### March 6, 2012 Session

#### References Indexes

Base = 100 To September 15th, 1998	Close	Change		Previous Close	Market Capitalization XOF
		Value	%		
BRVM 10	174.19	1.48	0.86%	172.71	2,643,747,240,838
BRVM Composite	149.03	1.15	0.78%	147.88	3,411,877,391,273
<b>Bonds Market Capitalization ( XOF)</b>					<b>800,349,398,400</b>



#### Sectoral Indexes

Base = 100 on June 14th, 1999	Close	Change		Previous Close	Number of Companies
		Value	%		
BRVM - Industry	78.40	0.43	0.55%	77.97	13
BRVM - Services Publics	368.54	-0.69	-0.19%	369.23	4
BRVM - FinaUnlisted	53.48	-0.11	-0.20%	53.59	8
BRVM - Transspendedortation	201.55	0.00	0.00%	201.55	2
BRVM - Agriculture	480.03	22.08	4.82%	457.95	4
BRVM - Distribution	108.32	1.69	1.58%	106.63	7
BRVM - Others Sectors	59.26	0.00	0.00%	59.26	1

#### Market Summary

	Volume Traded	Total Value Traded (XOF)	Number of Transactions	Number of securities Traded	securities			
					Gains	Losses	traded	
Stocks	577,905	356,733,105	116	15	7	4	4	4
Bonds	17	170,000	5	1	0	0	1	1
Rights	0	0	0	0	0	0	0	0

Most Actives securities		Raise			Drop		
securities	Volume	securities	Price	Change	securities	Price	Change
ECOBANK TRANS. IUnlistedORP. 1	571,805	SOGB CI	75,000	5000	CIE CI	24,000	-990
SAPH CI	1,886	SAPH CI	51,000	3900	PALM CI	20,500	-505
PALM CI	1,314	NESTLE CI	45,000	2000	SGB CI	41,500	-500
SOGB CI	1,004	CFAO CI	18,625	1295	SIVOA CI	6,490	-210
SONATEL SN	881	BERNABE CI	30,000	1000			

#### International Exchange indexes

African exchanges	Indexes	Close 6-mars-12	Change Previous Close Session	indexes 30-déc.-11	Other exchanges	Indexes	Close 6-mars-12	Changes Previous Close Session	Indexes au 30-déc.-11
SABLAUnlistedA	MADEX	9,337.67	0.16%	9011.57	LONDRES (**)	FOOTSIE 100	5,814.90	-1.02%	5,572.28
LAGOS (*)	NSE	20,292.02	1.97%	20,730.63	NEW YORK (**)	DJIA	12,962.81	-0.11%	12,217.56
TUNIS (*)	TUNINDEX	4,743.59	-0.22%	4,722.25	TOKYO (*)	NIKKEI 225	9,637.63	-0.63%	8,455.35

(\*) Indexes of the day before

(\*\*) Indexes at 11 H00 GMT

#### Announced Coupons

Symbol	securities	Coupon		
		Net Income (XOF)	Detachment Date	Payment Date

NA: Not Available



**BONDS MARKET**

March 6, 2012 Session

Symbol	Security	Qty	Price Bid./Ask.	Qty	Curr. Price	Volume	Value	Previous Price	Next Session		Coupon Income	Type Amort	Bond Coupon			
									Price Référence	Price Range			Period	Net Income	Payment date	
<b>REGIONAL BOND</b>																
BIDC.O1	BIDC 5.60% 2006-2013				NC			10,000	10,000	9,250	10,750	318.25	ACD	A	560.000	August 11, 2011
BIDC.O2	BIDC 6.75 2010-2017		/ 10000	295	10,000	17	170,000	10,000	10,000	9,250	10,750	284.79	ACD	S	337.500	04/04-10
BOAB.O2	BOA BENIN 6.20% 2009-2014		/ 10000	60	NC			9,900	9,900	9,160	10,640	409.23	AC	A	582.800	June 23, 2011
BOABF.O2	BOA BURKINA F. 6.20% 2009-2014				NC			10,000	10,000	9,250	10,750	409.23	AC	A	582.800	June 23, 2011
BOAC.O1	BOA - CI 6.20% 2009-2014				NC			10,000	10,000	9,250	10,750	426.65	AC	A	607.600	June 23, 2011
BOAD.O7	BOAD 5% 2005-2013				NC			10,000	10,000	9,250	10,750	94.52	ACD	A	500.000	December 28, 2011
BOAD.O9	BOAD 5% 2006-2014				NC			10,000	10,000	9,250	10,750	38.36	ACD	A	500.000	February 7, 2012
BOAD.O10	BOAD 4.75% 2006-2012				NC			10,000	10,000	9,250	10,750	36.44	ACD	A	475.000	February 7, 2012
BOAM.O2	BOA MALI 6.50% 2009-2014				NC			10,000	10,000	9,250	10,750	397.09	AC	A	565.500	June 23, 2011
BOAN.O1	BOA NIGER 6.50% 2009-2014				NC			9,850	9,850	9,115	10,585	397.09	AC	A	565.500	June 23, 2011
BOAS.O1	BOA SENEGAL 6.50% 2009-2014				NC			9,800	9,800	9,065	10,535	429.04	IF	A	611.000	June 23, 2011
CAAB.O3	CAA BENIN 6.50% 2011-2016				NC			10,000	10,000	9,250	10,750	209.56	ACD	A	650.000	November 9, 2011
CLTB.O2	CELTEL BURKINA 6.35% 2007-2013				NC			10,000	10,000	9,250	10,750	29.35	ACD	S	298.450	17/02-08
EOS.O2	ETAT SENEGAL 5.50% 2007-2012				NC			10,000	10,000	9,250	10,750	210.96	ACD	A	550.000	October 18, 2011
EOS.O3	ETAT SENEGAL 6.75% 2010-2015				NC			9,900	9,900	9,160	10,640	205.27	ACD	A	675.000	November 16, 2011
EOT.O2	ETAT TOGOLAIS 6.50% 2011-2016				NC			9,900	9,900	9,160	10,640	634.02	ACD	A	650.000	March 15, 2011
PAAC.O1	PAA 6.95% 2010-2017				NC			9,900	9,900	9,160	10,640	184.74	ACD	S	338.639	28/05-11
PADS.O2	PAD 7% 2010-2017				NC			10,000	10,000	9,250	10,750	125.14	ACD	S	304.500	22/06-12
PALC.O1	PALMCI 7% 2009-2016				NC			10,000	10,000	9,250	10,750	129.68	ACD	S	343.000	28/06-12
SEM.O1	SEMA 6.85% 2007-2012				NC			10,000	10,000	9,250	10,750	168.17	ACD	S	297.975	24/05-11
SHAF.O2	SHELTER AFRIQUE 6% 2008-2014				NC			10,000	10,000	9,250	10,750	174.25	ACD	S	299.178	21/05-11
STRAC.O1	SOTRA 6.80% 2007-2012				NC			9,800	9,800	9,065	10,535	449.73	AC	A	666.400	July 3, 2011
TGTLT.O1	TOGO TELECOM 6.50% 2007-2014	45	5800 / 6000	60	NC			6,000	6,000	5,550	6,450	20.73	ACD	S	188.116	15/02-08
TPBF.O2	TPBF 6.50% 2011-2016				NC			10,000	10,000	9,250	10,750	134.97	ACD	A	650.000	December 21, 2011
TPCI.O8	TPCI 6.95% 2009-2014	300	9800 /		NC			9,800	9,800	9,065	10,535	408.60	ACD	A	696.904	August 5, 2011
TPCI.O9	TPCI 6.25% 2010-2013				NC			9,800	9,800	9,065	10,535	478.14	IF	A	625.000	May 31, 2011
TPCI.O10	TPCI 7% 2010-2017		/ 10000	804	NC			10,000	10,000	9,250	10,750	300.27	AC	A	700.000	October 1, 2011
TPCI.O11	TPCI 6.5% 2011-2016		/ 10000	11,700	NC			10,000	10,000	9,250	10,750	308.08	AC	A	650.000	September 15, 2011
<b>TOTAL</b>						<b>17</b>	<b>170,000</b>									
<b>KOLAS BOND</b>																
AFD.O1	AFD 5.25% 2008-2016				NC			9,900	9,900	9,160	10,640	516.39	IF	A	525.000	March 12, 2011
<b>TOTAL</b>																
<b>TOTAL-BONDS MARKET</b>						<b>17</b>	<b>170,000</b>									

**Legend**

Type Amort: Type d'Amortissement - IF: IN FINE - AC: AMORTISSEMENT CONSTANT - AD: AMORTISSEMENT DEGRESSIF - ACD: AMORTISSEMENT DIFFERE CONSTANT

Period: Coupons Payment Period - A: Yearly - S: Semi annual - T: Quaterly

Payment date: Interest Payment expiry

Mentions: NC: Unlisted Ex: Ex-coupon ou Ex-right SP: Suspended DIF: Differed

**Notices, Decisions, Instructions & Circulars of the day**

Avis N°043/BRVM du 06 Mars 2012 CEDA CI - Trading Suspension (07/03/2012).

 Notices and instructions are available with National Offices and on the Website of BRVM: [www.brvn.org](http://www.brvn.org)
**Erratum:**