



Bulletin Officiel de la Cote

BOURSE REGIONALE DES VALEURS MOBILIERES S.A.

SOCIETE ANONYME AU CAPITAL DE FCFA 3 062 040 000
 Siège Social: Abidjan - COTE D'IVOIRE
 Siège Social : 18, Rue Joseph Anoma (Rue des Banques) – 01 B.P. 3802 Abidjan
 Tel: (225) 20 326 685 / 20 326 686 Fax : (225) 20 326 684
 Site Internet: www.brvm.org

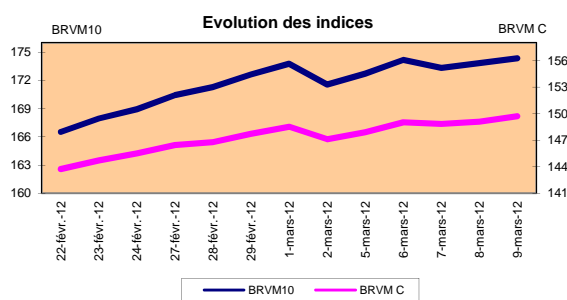
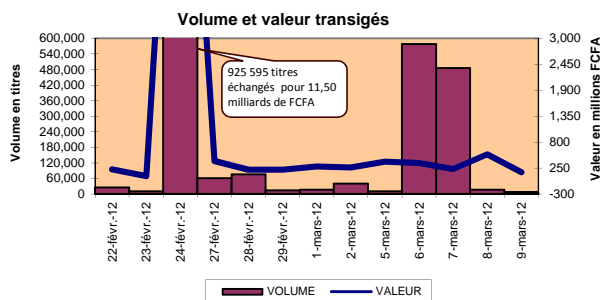
Bulletin du 09 mars 2012

Vol : 15 N° : 49

Séance du 09 mars 2012

Indices de référence

Base = 100 au 15 septembre 1998	Fermeture	Variation		Fermeture Précédente	Capitalisation Boursière en F CFA
		en valeur	en %		
BRVM 10	174.33	0.51	0.29%	173.82	2,645,894,205,923
BRVM Composite	149.72	0.63	0.42%	149.09	3,427,701,524,898
Capitalisation du marché obligataire (en F CFA)					800,526,567,800



Indices sectoriels

Base = 100 au 14 juin 1999	Fermeture	Variation		Fermeture Précédente	Nombre de sociétés
		en valeur	en %		
BRVM - Industrie	80.93	1.00	1.25%	79.93	13
BRVM - Services Publics	368.41	-0.12	-0.03%	368.53	4
BRVM - Finances	54.21	0.37	0.69%	53.84	8
BRVM - Transport	201.55	0.00	0.00%	201.55	2
BRVM - Agriculture	473.02	2.90	0.62%	470.11	4
BRVM - Distribution	109.80	0.90	0.83%	108.90	7
BRVM - Autres Secteurs	58.58	0.00	0.00%	58.58	1

Sommaire du marché

	Volume Transigé	Valeur Totale Transigée (F CFA)	Nombre de Transactions	Nombre de titres échangés	Titres		
					Gains	Pertes	Inchangés
Actions	7,038	155,527,005	105	18	7	2	9
Obligations	292	2,870,560	12	6	1	1	4
Droits	0	0	0	0	0	0	0

Titres les plus actifs			Plus fortes hausses			Plus fortes baisses		
Titres	Volume	Cours	Titres	Cours	Variation	Titres	Cours	Variation
ECOBANK TRANS. INCORP. TG	2,400	75,225	SITAB CI	5245	49,000	SAPH CI	49,000	-1,000
BANK OF AFRICA CI	2,236	74,000	SOGB CI	4000	9,800	TPCI 7% 2010-2017	9,800	-200
PALM CI	771	37,625	BICI CI	2625	125,950	SONATEL SN	125,950	-50
SONATEL SN	346	72,000	TOTAL CI	1500				
FILTISAC CI	311	32,800	BANK OF AFRICA NG	1300				

Indices boursiers internationaux

Places financières africaines	Indices	Clôture 9-mars-12	Variation Séance précédente	Indices au 30-déc.-11	Autres places financières	Indices	Clôture 9-mars-12	Variations Séance précédente	Indices au 30-déc.-11
ACCRA (*)	GSE	1,028.69	1.41%	969.03	PARIS (**)	CAC 40	3,473.65	-0.14%	3,159.81
CASABLANCA (*)	MADEX	9,302.24	0.00%	9011.57	LONDRES (**)	FOOTSIE 100	5,856.13	0.06%	5,572.28
LAGOS (*)	NSE	21,181.41	0.54%	20,730.63	NEW YORK (**)	DJIA	12,907.94	0.55%	12,217.56
TUNIS (*)	TUNINDEX	4,759.64	0.54%	4,722.25	TOKYO (*)	NIKKEI 225	9,768.96	0.00%	8,455.35

(*) Indices de la veille

(**) Indices à 11 H00GMT

Coupons annoncés

Symbole	Titre	Coupon		
		Montant net (FCFA)	Date de détachement	Date de paiement

ND: Non Disponible

Symbole	Titre	Classe de Capitalisation Boursière	Qté	Cours		Qté	Cours du jour	Volume	Valeur	Cours Précéd.	Séance prochaine		Dernier dividende Payé		Cours extrêmes de l'année		
				Ach. / Vend.							Cours Référence	Ecart maximum	Montant net	Date	Plus Bas	Plus Haut	
SECTEUR - INDUSTRIE																	
CABC	SICABLE CI	C		/ 32500	144	32,500	3	97,500	32,500	32,500	30,065	34,935	5,220	29-août-11	29,000	32,500	
CDAC	CEDA CI	C							2,000	2,000	1,850	2,150	630	07-juil-00	1,600	4,165	
FTSC	FILTISAC CI	C	521	2600 / 2650	4,209	2,650	311	824,150	2,650	2,650	2,455	2,845	321	19-juil-10	2,500	2,700	
NEIC	NEI CI	C	8	3000 /					3,000	3,000	2,775	3,225	225	28-juin-01	3,000	3,000	
NTLC	NESTLE CI	B	45	48000 /					48,000	48,000	44,400	51,600	630	12-août-11	43,000	48,000	
SEMC	CROWN SIEM CI	B	19	22000 /					22,000	22,000	20,350	23,650	675	28-sept-11	21,995	23,640	
SIVC	SIVOA CI	C	32	6200 / 6500	93	6,500	117	760,500	6,200	6,500	6,015	6,985	540	13-sept-11	6,200	7,200	
SLBC	SOLIBRA CI	A	1	185220 /					172,300	172,300	159,380	185,220	16,380	07-juil-11	163,000	172,300	
SMBC	SMB CI	B	498	19000 / 20000	20	19,000	100	1,900,000	19,000	19,000	17,575	20,425	344	14-sept-11	19,000	20,425	
STBC	SITAB CI	B	32	75225 /					69,980	75,225	69,585	80,865	8,940	21-juil-11	63,000	75,225	
TTRC	TRITURAF CI-Ste en Liquidation	C		/ 925	50				1,000	1,000	925	1,075	1,440	19-juil-02	1,000	1,000	
UNLC	UNILEVER CI	B	20	38500 / 38500	1				38,005	38,005	35,155	40,855	2,421	02-juil-10	38,000	38,515	
UNXC	UNIWAX CI	C	16	6500 / 7000	11				7,000	7,000	6,475	7,525	1,350	06-juin-03	7,000	9,675	
TOTAL							540	4,259,175									
SECTEUR - SERVICES PUBLICS																	
CIEC	CIE CI	B	500	22000 / 23985	4	23,985	98	2,350,530	23,985	23,985	22,190	25,780	1,962	04-juil-11	16,500	25,850	
ONATBF	ONATEL BF	A	35	39900 / 39900	3				40,000	40,000	37,000	43,000	2,625	15-juil-11	40,000	44,000	
SDCC	SODE CI	B	41	26000 /					26,000	26,000	24,050	27,950	2,385	04-juil-11	18,000	28,975	
SNTS	SONATEL SN	A	12	125005 / 125950	1,397	125,950	346	43,578,700	126,000	125,950	116,505	135,395	12,600	28-avr-11	120,000	126,000	
TOTAL							588	49,673,230									
SECTEUR - FINANCES																	
BICC	BICI CI	B	25	37625 /					37,625	37,625	34,805	40,445	432	24-oct-11	31,000	37,625	
BOAB	BANK OF AFRICA BN	B	20	53505 /					51,000	51,000	47,175	54,825	3,255	02-mai-11	48,000	51,000	
BOABF	BANK OF AFRICA BF	B	300	36000 /					36,000	36,000	33,300	38,700	2,125	03-mai-11	32,000	36,000	
BOAC	BANK OF AFRICA CI	B	264	27000 / 28000	120	27,000	2,236	60,372,000	26,510	27,000	24,975	29,025	1,800	02-juin-10	26,510	29,005	
BOAN	BANK OF AFRICA NG	B	15	32000 / 32800	150	32,800	35	1,148,000	31,500	32,800	30,340	35,260	2,250	13-avr-11	30,000	33,000	
ETIT	ECOBANK TRANS. INCORP. TG (*)	A	34,557	37 / 38	245,612	37	2,400	88,800	37	37	35	39	1,828	27-juil-11	36	38	
SAFC	SAFCA CI	C	39	17000 /					17,000	17,000	15,725	18,275	1,440	29-juil-11	17,000	17,005	
SGBC	SGB CI	A	35	41000 / 41000	1				41,500	41,500	38,390	44,610	3,992	09-sept-11	35,100	45,000	
TOTAL							4,691	62,361,300									
SECTEUR - TRANSPORT																	
SDSC	BOLLORE AFRICA LOGISTICS CI	B	20	40100 /					40,000	40,000	37,000	43,000	3,428	08-juin-11	40,000	48,000	
SVOC	MOVIS CI	C	5	2700 /					2,900	2,900	2,685	3,115	270	05-juil-99	2,700	2,900	
TOTAL																	
SECTEUR - AGRICULTURE																	
PALC	PALM CI	A	608	20500 / 21000	4,710	21,000	771	16,191,000	21,000	21,000	19,425	22,575	225	21-juil-00	15,000	21,005	
SICC	SICOR CI	C							3,795	3,795	3,515	4,075	1,919	25-sept-00	3,795	3,795	
SOGC	SOGB CI	A	23	74000 / 74500	43	74,000	109	8,066,000	70,000	74,000	68,450	79,550	8,334	27-juin-11	52,000	75,000	
SPHC	SAPH CI	A	390	49000 / 50000	72	49,000	274	13,426,000	50,000	49,000	45,325	52,675	6,930	22-sept-11	39,000	51,000	
TOTAL							1,154	37,683,000									
SECTEUR - DISTRIBUTION																	
ABJC	SERVAIR ABIDJAN CI	C	8	8980 / 9000	60	8,980	35	314,300	8,980	8,980	8,310	9,650	225	13-juil-00	7,445	9,500	
BNBC	BERNABE CI	C	48	30000 /					30,000	30,000	27,750	32,250	3,150	27-juil-11	25,500	30,000	
CFAC	CFAO CI	B	123	17330 / 17330	1				18,625	18,625	17,230	20,020	987	21-juil-11	14,000	18,625	
PRSC	TRACTAFRIC MOTORS CI	B	20	80005/80005	4				80,000	80,000	74,000	86,000	11,250	24-juin-11	80,000	84,000	
SHEC	SHELL CI	B	1	13700 /					13,500	13,500	12,490	14,510	828	31-août-11	12,500	13,500	
SRIC	SARI CI	C	10	35000 /					35,000	35,000	32,375	37,625	2,309	21-juil-11	33,245	35,735	
TTLIC	TOTAL CI	B	20	72000 /					70,500	72,000	66,600	77,400	2,170	10-août-11	70,000	74,000	
TOTAL							65	1,550,300									
AUTRES SECTEURS																	
STAC	SETAO CI	C		/ 4800	84				4,745	4,745	4,390	5,100			4,745	4,800	
TOTAL																	
TOTAL - Marché des actions							7,038	155,527,005									

Légende:
(*) le capital de la société contient des actions de priorités convertibles au bout de 3 - 5 ans en actions ordinaires.

Mentions : NC: Non Coté Ex: Ex-coupon ou Ex-droit SP: Suspendu DIF: Différé

Classe de Capitalisation Boursière :

- A: Sociétés ayant une capitalisation boursière Supérieure à 100 milliards FCFA.
- B: Sociétés ayant une capitalisation boursière Comprise entre 10 milliards FCFA et 100 milliards FCFA.
- C: Sociétés ayant une capitalisation boursière Inférieure ou égale à 10 milliards FCFA.

MARCHÉ DES DROITS

Symbole	Titre	Qté	Cours		Qté	Cours du jour	Volume	Valeur	Cours Précéd.	Séance prochaine		Parité	Période de Négociation	
			Ach. / Vend.							Cours Référence	Ecart maximum		Début	Fin
TOTAL-Marché des droits														

Parité: y pour x signifie y droits pour x action nouvelle

MARCHÉ DES OBLIGATIONS

Séance du 09 mars 2012

Symbole	Titre	Qté	Cours Ach. / Vend.	Qté	Cours du jour	Volume	Valeur	Cours Précéd.	Séance prochaine		Coupon couru	Type Amort	Coupon d'intérêt			
									Cours Référence	Ecart max			Période	Montant net	Eché.	
OBLIGATIONS REGIONALES																
BIDC.O1	BIDC 5.60% 2006-2013				NC			10,000	10,000	9,250	10,750	322.84	ACD	A	560.000	11-août
BIDC.O2	BIDC 6.75 % 2010-2017	3,843	9000 / 10000	260	10,000	44	440,000	10,000	10,000	9,250	10,750	290.34	ACD	S	337.500	04/04-10
BOAB.O2	BOA BENIN 6.20% 2009-2014		/ 10000	60	NC			9,900	9,900	9,160	10,640	414.01	AC	A	582.800	23-juin
BOABF.O2	BOA BURKINA F. 6.20% 2009-2014				NC			10,000	10,000	9,250	10,750	414.01	AC	A	582.800	23-juin
BOAC.O1	BOA - CI 6.20% 2009-2014				NC			10,000	10,000	9,250	10,750	431.63	AC	A	607.600	23-juin
BOAD.O7	BOAD 5% 2005-2013				NC			10,000	10,000	9,250	10,750	98.63	ACD	A	500.000	28-déc
BOAD.O9	BOAD 5% 2006-2014				NC			10,000	10,000	9,250	10,750	42.47	ACD	A	500.000	07-févr
BOAD.O10	BOAD 4.75% 2006-2012				NC			10,000	10,000	9,250	10,750	40.34	ACD	A	475.000	07-févr
BOAM.O2	BOA MALI 6.50% 2009-2014				NC			10,000	10,000	9,250	10,750	401.72	AC	A	565.500	23-juin
BOAN.O1	BOA NIGER 6.50% 2009-2014				NC			9,850	9,850	9,115	10,585	401.72	AC	A	565.500	23-juin
BOAS.O1	BOA SENEGAL 6.50% 2009-2014				NC			9,800	9,800	9,065	10,535	434.04	IF	A	611.000	23-juin
CAAB.O3	CAA BENIN 6.50% 2011-2016				10,000	25	250,000	10,000	10,000	9,250	10,750	214.89	ACD	A	650.000	09-nov
CLTB.O2	CELTEL BURKINA 6.35% 2007-2013				10,000	6	60,000	10,000	10,000	9,250	10,750	34.25	ACD	S	298.450	17/02-08
EOS.O2	ETAT SENEGAL 5.50% 2007-2012				NC			10,000	10,000	9,250	10,750	215.48	ACD	A	550.000	18-oct
EOS.O3	ETAT SENEGAL 6.75% 2010-2015				NC			9,900	9,900	9,160	10,640	210.82	ACD	A	675.000	16-nov
EOT.O2	ETAT TOGOLAIS 6.50% 2011-2016	92	9995 /		9,995	8	79,960	9,900	9,995	9,250	10,740	639.34	ACD	A	650.000	15-mars
PAAC.O1	PAA 6.95% 2010-2017				NC			9,900	9,900	9,160	10,640	190.33	ACD	S	338.639	28/05-11
PADS.O2	PAD 7% 2010-2017				NC			10,000	10,000	9,250	10,750	130.14	ACD	S	304.500	22/06-12
PALC.O1	PALMCI 7% 2009-2016	11	10000 /		NC			10,000	10,000	9,250	10,750	135.32	ACD	S	343.000	28/06-12
SEM.O1	SEMA 6.85% 2007-2012				NC			10,000	10,000	9,250	10,750	173.07	ACD	S	297.975	24/05-11
SHAF.O2	SHELTER AFRIQUE 6% 2008-2014				NC			10,000	10,000	9,250	10,750	179.18	ACD	S	299.178	21/05-11
STRAC.O1	SOTRA 6.80% 2007-2012				NC			9,800	9,800	9,065	10,535	455.19	AC	A	666.400	03-juil
TGTLT.O1	TOGO TELECOM 6.50% 2007-2014	45	5800 /		6,000	2	12,000	6,000	6,000	5,550	6,450	23.84	ACD	S	188.116	15/02-08
TPBF.O2	TPBF 6.50% 2011-2016				NC			10,000	10,000	9,250	10,750	140.30	ACD	A	650.000	21-déc
TPCI.O8	TPCI 6.95% 2009-2014	26	9850 / 10000	200	NC			9,800	9,800	9,065	10,535	414.32	ACD	A	696.904	05-août
TPCI.O9	TPCI 6.25% 2010-2013	7	9700 / 9700	7	NC			9,800	9,800	9,065	10,535	483.27	IF	A	625.000	31-mai
TPCI.O10	TPCI 7% 2010-2017	62	9800 / 10000	804	9,800	207	2,028,600	10,000	9,800	9,065	10,535	306.01	AC	A	700.000	01-oct
TPCI.O11	TPCI 6.5% 2011-2016	28	9950 / 9999	12	NC			10,000	10,000	9,250	10,750	313.42	AC	A	650.000	15-sept
TOTAL						292	2,870,560									
OBLIGATIONS KOLAS																
AFD.O1	AFD 5.25% 2008-2016				NC			9,900	9,900	9,160	10,640	Ex-c	IF	A	525.000	12-mars
TOTAL																
TOTAL-Marché des obligations						292	2,870,560									

Légende:

Type Amort: Type d'Amortissement - IF: IN FINE - AC: AMORTISSEMENT CONSTANT - AD: AMORTISSEMENT DEGRESSIF - ACD: AMORTISSEMENT DIFFERE CONSTANT

Période : Périodicité de paiement des coupons - A: annuelle - S: Semestrielle - T: Trimestrielle

Eché. : Echéance de paiement des intérêts

Mentions : NC: Non Coté Ex: Ex-coupon ou Ex-droit SP: Suspendu DIF: Différé

Avis, Décisions, Instructions & Circulaires du jour

Les Avis et Instructions sont disponibles auprès des Antennes Nationales de Bourse et sur le site internet de la BRVM : www.brv.org

Erratum:



Official Newsletter

BOURSE REGIONALE DES VALEURS MOBILIERES S.A.

LIMITED COMPANY, CAPITAL XOF 3 062 040 000

Head Office: Abidjan - COTE D'IVOIRE

Address: 18, Rue Joseph Anoma (Rue des Banques) – 01 B.P. 3802 Abidjan

Tel: (225) 20 326 685 / 20 326 686 Fax : (225) 20 326 684

Website : www.brvm.org

March 9, 2012

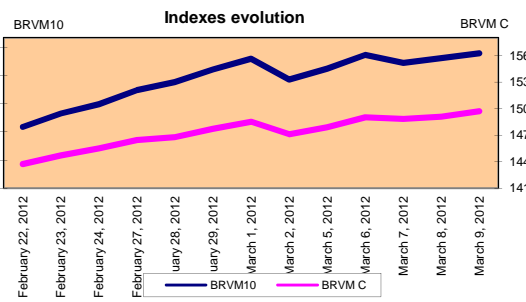
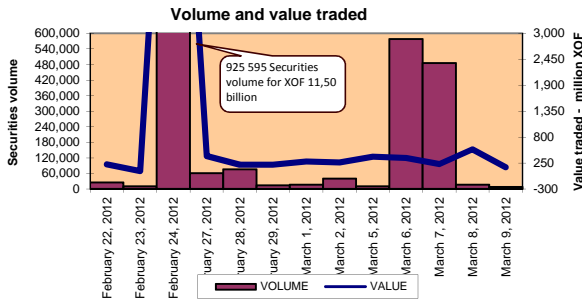
Vol : 15 N° : 49

March 9, 2012 Session

References Indexes

Base = 100 To September 15th, 1998	Close	Change		Previous Close	Market Capitalization XOF
		Value	%		
BRVM 10	174.33	0.51	0.29%	173.82	2,645,894,205,923
BRVM Composite	149.72	0.63	0.42%	149.09	3,427,701,524,898

Bonds Market Capitalization (XOF)	800,526,567,800
---	------------------------



Sectoral Indexes

Base = 100 on June 14th, 1999	Close	Change		Previous Close	Number of Companies
		Value	%		
BRVM - Industry	80.93	1.00	1.25%	79.93	13
BRVM - Services Publics	368.41	-0.12	-0.03%	368.53	4
BRVM - Financial	54.21	0.37	0.69%	53.84	8
BRVM - Transportation	201.55	0.00	0.00%	201.55	2
BRVM - Agriculture	473.02	2.90	0.62%	470.11	4
BRVM - Distribution	109.80	0.90	0.83%	108.90	7
BRVM - Others Sectors	58.58	0.00	0.00%	58.58	1

Market Summary

	Volume Traded	Total Value Traded (XOF)	Number of Transactions	Number of securities Traded	securities		
					Gains	Losses	traded
Stocks	7,038	155,527,005	105	18	7	2	9
Bonds	292	2,870,560	12	6	1	1	4
Rights	0	0	0	0	0	0	0

Most Actives securities		Raise			Drop		
securities	Volume	securities	Price	Change	securities	Price	Change
ECOBANK TRANS. IUnlistedORP. 1	2,400	SITAB CI	75,225	5245	SAPH CI	49,000	-1,000
BANK OF AFRICA CI	2,236	SOGB CI	74,000	4000	TPCI 7% 2010-2017	9,800	-200
PALM CI	771	BICI CI	37,625	2625	SONATEL SN	125,950	-50
SONATEL SN	346	TOTAL CI	72,000	1500			
FILTISAC CI	311	BANK OF AFRICA NG	32,800	1300			

International Exchange indexes

African exchanges	Indexes	Close 9-mars-12	Change Previous Close Session	indexes 30-déc.-11	Other exchanges	Indexes	Close 9-mars-12	Changes Previous Close Session	Indexes 30-déc.-11
SABLAUnlistedA	MADEX	9,302.24	0.00%	9011.57	LONDRES (**)	FOOTSIE 100	5,856.13	0.06%	5,572.28
LAGOS (*)	NSE	21,181.41	0.54%	20,730.63	NEW YORK (**)	DJIA	12,907.94	0.55%	12,217.56
TUNIS (*)	TUNINDEX	4,759.64	0.54%	4,722.25	TOKYO (*)	NIKKEI 225	9,768.96	0.00%	8,455.35

(*) Indexes of the day before

(**) Indexes at 11 H00 GMT

Announced Coupons

Symbol	securities	Coupon		
		Net Income (XOF)	Detachment Date	Payment Date

NA: Not Available

STOCKS MARKET

March 9, 2012 Session

Symbol	Security	Classify Stock exchange Capitalization	Qty	Price Bid./Ask.	Qty	Curr. Price	Volume	Value	Previous Price	Next Session		Dividend paid		Year 2012		
										Price Reference	Price Range	Net Income	Date	Low	High	
INDUSTRY - SECTOR																
CABC	SICABLE CI	C		/ 32500	144	32,500	3	97,500	32,500	32,500	30,065	34,935	5,220	August 29, 2011	29,000	32,500
CDAC	CEDA CI	C				SP			2,000	2,000	1,850	2,150	630	July 7, 2000	1,600	4,165
FTSC	FILTISAC CI	C	521	2600 / 2650	4,209	2,650	311	824,150	2,650	2,650	2,455	2,845	321	July 19, 2010	2,500	2,700
NEIC	NEI CI	C	8	3000 /		NC			3,000	3,000	2,775	3,225	225	June 28, 2001	3,000	3,000
N TLC	NESTLE CI	B	45	48000 /		NC			48,000	48,000	44,400	51,600	630	August 12, 2011	43,000	48,000
SEMC	CROWN SIEM CI	B	19	22000 /		NC			22,000	22,000	20,350	23,650	675	September 28, 2011	21,995	23,640
SIVC	SIVOA CI	C	32	6200 / 6500	93	6,500	117	760,500	6,200	6,500	6,015	6,985	540	September 13, 2011	6,200	7,200
SLBC	SOLIBRA CI	A	1	185220 /		NC			172,300	172,300	159,380	185,220	16,380	July 7, 2011	163,000	172,300
SMBC	SMB CI	B	498	19000 / 20000	20	19,000	100	1,900,000	19,000	19,000	17,575	20,425	344	September 14, 2011	19,000	20,425
STBC	SITAB CI	B	32	75225 /		75,225	9	677,025	69,980	75,225	69,585	80,865	8,940	July 21, 2011	63,000	75,225
TTRC	TRITURAF CI - Company in Liquidation	C		/ 925	50	NC			1,000	1,000	925	1,075	1,440	July 19, 2002	1,000	1,000
UNLC	UNILEVER CI	B	20	38500 / 38500	1	NC			38,005	38,005	35,155	40,855	2,421	July 2, 2010	38,000	38,515
UNXC	UNIWAX CI	C	16	6500 / 7000	11	NC			7,000	7,000	6,475	7,525	1,350	June 6, 2003	7,000	9,675
TOTAL							540	4,259,175								
PUBLICS UTILITIES - SECTOR																
CIEC	CIE CI	B	500	22000 / 23985	4	23,985	98	2,350,530	23,985	23,985	22,190	25,780	1,962	July 4, 2011	16,500	25,850
ONTBF	ONATEL BF	A	35	39900 / 39900	3	NC			40,000	40,000	37,000	43,000	2,625	July 15, 2011	40,000	44,000
SDCC	SODE CI	B	41	26000 /		26,000	144	3,744,000	26,000	26,000	24,050	27,950	2,385	July 4, 2011	18,000	28,975
SNTS	SONATEL SN	A	12	125005 / 125950	1,397	125,950	346	43,578,700	126,000	125,950	116,505	135,395	12,600	April 28, 2011	120,000	126,000
TOTAL							588	49,673,230								
FINANCIAL - SECTOR																
BICC	BICI CI	B	25	37625 /		37,625	20	752,500	35,000	37,625	34,805	40,445	432	October 24, 2011	31,000	37,625
BOAB	BANK OF AFRICA BN	B	20	53505 /		NC			51,000	51,000	47,175	54,825	3,255	May 2, 2011	48,000	51,000
BOABF	BANK OF AFRICA BF	B	300	36000 /		NC			36,000	36,000	33,300	38,700	2,125	May 3, 2011	32,000	36,000
BOAC	BANK OF AFRICA CI	B	264	27000 / 28000	120	27,000	2,236	60,372,000	26,510	27,000	24,975	29,025	1,800	June 2, 2010	26,510	29,005
BOAN	BANK OF AFRICA NG	B	15	32000 / 32800	150	32,800	35	1,148,000	31,500	32,800	30,340	35,260	2,250	April 13, 2011	30,000	33,000
ETIT	ECOBANK TRANS. INCORP. TG (*)	A	34,557	37 / 38	245,612	37	2,400	88,800	37	37	35	39	1,828	July 27, 2011	36	38
SAFC	SAFCA CI	C	39	17000 /		NC			17,000	17,000	15,725	18,275	1,440	July 29, 2011	17,000	17,005
SGBC	SGB CI	A	35	41000 / 41000	1	NC			41,500	41,500	38,390	44,610	3,992	September 9, 2011	35,100	45,000
TOTAL							4,691	62,361,300								
TRANSPORTATION - SECTOR																
SDSC	BOLLORE AFRICA LOGISTICS CI	B	20	40100 /		NC			40,000	40,000	37,000	43,000	3,428	June 8, 2011	40,000	48,000
SVOC	MOVIS CI	C	5	2700 /		NC			2,900	2,900	2,685	3,115	270	Change	2,700	2,900
TOTAL																
AGRICULTURE - SECTOR																
BRVM - Fin	PALM CI	A	608	20500 / 21000	4,710	21,000	771	16,191,000	21,000	21,000	19,425	22,575	225	July 21, 2000	15,000	21,005
SICC	SICOR CI	C				NC			3,795	3,795	3,515	4,075	1,919	September 25, 2000	3,795	3,795
SOGC	SOGB CI	A	23	74000 / 74500	43	74,000	109	8,066,000	70,000	74,000	68,450	79,550	8,334	June 27, 2011	52,000	75,000
SPHC	SAPH CI	A	390	49000 / 50000	72	49,000	274	13,426,000	50,000	49,000	45,325	52,675	6,930	September 22, 2011	39,000	51,000
TOTAL							1,154	37,683,000								
DISTRIBUTION - SECTOR																
ABJC	SERVAIR ABIDJAN CI	C	8	8980 / 9000	60	8,980	35	314,300	8,980	8,980	8,310	9,650	225	July 13, 2000	7,445	9,500
BNBC	BERNABE CI	C	48	30000 /		30,000	22	660,000	30,000	30,000	27,750	32,250	3,150	July 27, 2011	25,500	30,000
CFAC	CFAO CI	B	123	17330 / 17330	1	NC			18,625	18,625	17,230	20,020	987	July 21, 2011	14,000	18,625
PRSC	TRACTAFRIC MOTORS CI	B	20	80005/80005	4	NC			80,000	80,000	74,000	86,000	11,250	June 24, 2011	80,000	84,000
SHEC	SHELL CI	B	1	13700 /		NC			13,500	13,500	12,490	14,510	828	August 31, 2011	12,500	13,500
SRIC	SARI CI	C	10	35000 /		NC			35,000	35,000	32,375	37,625	2,309	July 21, 2011	33,245	35,735
ITLC	TOTAL CI	B	20	72000 /		72,000	8	576,000	70,500	72,000	66,600	77,400	2,170	August 10, 2011	70,000	74,000
TOTAL							65	1,550,300								
OTHERS SECTORS																
STAC	SETAO CI	C		/ 4800	84	NC			4,745	4,745	4,390	5,100			4,745	4,800
TOTAL																
TOTAL - STOCKS MARKET							7,038	155,527,005								

Legend

(*) the capital of the company includes convertible preference shares after 3 to 5 years into common shares.

Mentions : NC: Unlisted Ex: Ex-coupon or Ex-right SP: Suspended DIF: Differed

Classify Stock exchange Capitalization :

A: Companies having a stock exchange capitalization Higher than XOF 100 billion.

B: Companies having a stock exchange capitalization Ranging between XOF 10 billion and XOF 100 billion.

C: Companies having a Lower stock exchange capitalization or equalizes to XOF 10 billion.

RIGHTS MARKET

Symbol	Security	Qty	Price Bid./Ask.	Qty	Curr. Price	Volume	Value	Previous Price	Next Session		Parity	Trading Period	
									Reference Price	Price Range		Start	End
TOTAL-RIGHTS MARKET													

Parity: y to x means y rights for x new shares

BONDS MARKET

March 9, 2012 Session

Symbol	Security	Qty	Price Bid./Ask.	Qty	Curr. Price	Volume	Value	Previous Price	Next Session		Coupon Income	Type Amort	Bond Coupon			
									Price Référence	Price Range			Period	Net Income	Payment date	
REGIONAL BOND																
BIDC.O1	BIDC 5.60% 2006-2013				NC			10,000	10,000	9,250	10,750	322.84	ACD	A	560.000	August 11, 2011
BIDC.O2	BIDC 6.75 % 2010-2017	3,843	9000 / 10000	260	10,000	44	440,000	10,000	10,000	9,250	10,750	290.34	ACD	S	337.500	04/04-10
BOAB.O2	BOA BENIN 6.20% 2009-2014		/ 10000	60	NC			9,900	9,900	9,160	10,640	414.01	AC	A	582.800	June 23, 2011
BOABF.O2	BOA BURKINA F. 6.20% 2009-2014				NC			10,000	10,000	9,250	10,750	414.01	AC	A	582.800	June 23, 2011
BOAC.O1	BOA - CI 6.20% 2009-2014				NC			10,000	10,000	9,250	10,750	431.63	AC	A	607.600	June 23, 2011
BOAD.O7	BOAD 5% 2005-2013				NC			10,000	10,000	9,250	10,750	98.63	ACD	A	500.000	December 28, 2011
BOAD.O9	BOAD 5% 2006-2014				NC			10,000	10,000	9,250	10,750	42.47	ACD	A	500.000	February 7, 2012
BOAD.O10	BOAD 4.75% 2006-2012				NC			10,000	10,000	9,250	10,750	40.34	ACD	A	475.000	February 7, 2012
BOAM.O2	BOA MALI 6.50% 2009-2014				NC			10,000	10,000	9,250	10,750	401.72	AC	A	565.500	June 23, 2011
BOAN.O1	BOA NIGER 6.50% 2009-2014				NC			9,850	9,850	9,115	10,585	401.72	AC	A	565.500	June 23, 2011
BOAS.O1	BOA SENEGAL 6.50% 2009-2014				NC			9,800	9,800	9,065	10,535	434.04	IF	A	611.000	June 23, 2011
CAAB.O3	CAA BENIN 6.50% 2011-2016				10,000	25	250,000	10,000	10,000	9,250	10,750	214.89	ACD	A	650.000	November 9, 2011
CLTB.O2	CELTEL BURKINA 6.35% 2007-2013				10,000	6	60,000	10,000	10,000	9,250	10,750	34.25	ACD	S	298.450	17/02-08
EOS.O2	ETAT SENEGAL 5.50% 2007-2012				NC			10,000	10,000	9,250	10,750	215.48	ACD	A	550.000	October 18, 2011
EOS.O3	ETAT SENEGAL 6.75% 2010-2015				NC			9,900	9,900	9,160	10,640	210.82	ACD	A	675.000	November 16, 2011
EOT.O2	ETAT TOGOLAIS 6.50% 2011-2016	92	9995 /		9,995	8	79,960	9,900	9,995	9,250	10,740	639.34	ACD	A	650.000	March 15, 2011
PAAC.O1	PAA 6.95% 2010-2017				NC			9,900	9,900	9,160	10,640	190.33	ACD	S	338.639	28/05-11
PADS.O2	PAD 7% 2010-2017				NC			10,000	10,000	9,250	10,750	130.14	ACD	S	304.500	22/06-12
PALC.O1	PALMCI 7% 2009-2016	11	10000 /		NC			10,000	10,000	9,250	10,750	135.32	ACD	S	343.000	28/06-12
SEM.O1	SEMA 6.85% 2007-2012				NC			10,000	10,000	9,250	10,750	173.07	ACD	S	297.975	24/05-11
SHAF.O2	SHELTER AFRIQUE 6% 2008-2014				NC			10,000	10,000	9,250	10,750	179.18	ACD	S	299.178	21/05-11
STRAC.O1	SOTRA 6.80% 2007-2012				NC			9,800	9,800	9,065	10,535	455.19	AC	A	666.400	July 3, 2011
TGTLT.O1	TOGO TELECOM 6.50% 2007-2014	45	5800 /		6,000	2	12,000	6,000	6,000	5,550	6,450	23.84	ACD	S	188.116	15/02-08
TPBF.O2	TPBF 6.50% 2011-2016				NC			10,000	10,000	9,250	10,750	140.30	ACD	A	650.000	December 21, 2011
TPCI.O8	TPCI 6.95% 2009-2014	26	9850 / 10000	200	NC			9,800	9,800	9,065	10,535	414.32	ACD	A	696.904	August 5, 2011
TPCI.O9	TPCI 6.25% 2010-2013	7	9700 / 9700	7	NC			9,800	9,800	9,065	10,535	483.27	IF	A	625.000	May 31, 2011
TPCI.O10	TPCI 7% 2010-2017	62	9800 / 10000	804	9,800	207	2,028,600	10,000	9,800	9,065	10,535	306.01	AC	A	700.000	October 1, 2011
TPCI.O11	TPCI 6.5% 2011-2016	28	9950 / 9999	12	NC			10,000	10,000	9,250	10,750	313.42	AC	A	650.000	September 15, 2011
TOTAL						292	2,870,560									
KOLAS BOND																
AFD.O1	AFD 5.25% 2008-2016				NC			9,900	9,900	9,160	10,640	Ex-c	IF	A	525.000	March 12, 2011
TOTAL																
TOTAL-BONDS MARKET						292	2,870,560									Change

Legend

Type Amort: Type d'Amortissement - IF: IN FINE - AC: AMORTISSEMENT CONSTANT - AD: AMORTISSEMENT DEGRESSIF - ACD: AMORTISSEMENT DIFFERE CONSTANT

Period : Coupons Payment Period - A: Yearly - S: Semi annual - T: Quaterly

BRVM - Financial

Mentions : NC: Unlisted Ex: Ex-coupon ou Ex-right SP: Suspended DIF: Differed

Notices, Decisions, Instructions & Circulars of the day

<p>Notices and instructions are available with National Offices and on the Website of BRVM: www.brvm.org</p> <p>Erratum:</p>
